



Shedding New Light On **MICROSCOPY**



Microscope objectives

# Our objectives help you focus on yours

Nikon is a leader in the development and manufacture of optical and digital imaging technology for advanced science and clinical research. With over a 100-year history of optical excellence, Nikon is committed to accelerating innovation in science and clinical imaging to improve healthcare and provide a better quality of life.



Nikon's first microscope, released in 1925



The switch from traditional film photography to digital imaging was a major milestone in the field of microscopy, opening up new possibilities in both application and technology. Introduction of digital imaging spurred significant technological changes including the development of objectives with enhanced optical quality and functionality to meet the new demands. Objective lenses are arguably the most important element in the microscope and Nikon continues to invest heavily in the development of objectives to meet the changing demands of science. Explore some of Nikon's newest developments in high-performance objectives in this brochure.





# In tireless pursuit of the highest quality

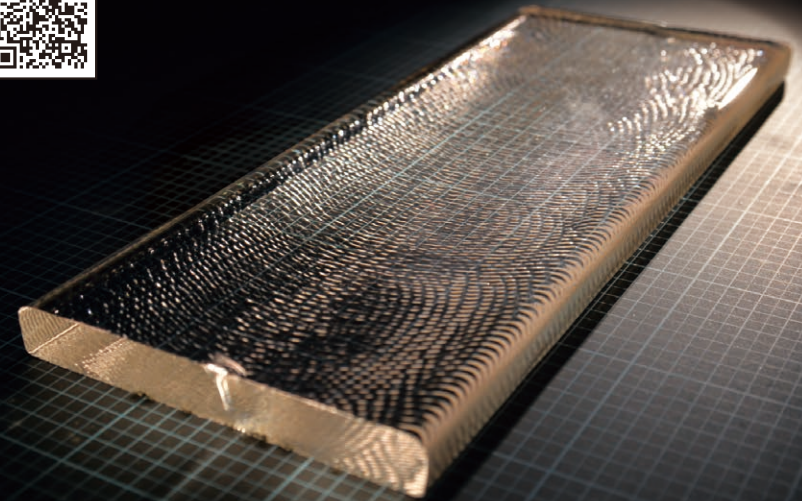
Each Nikon microscope objective is precision-crafted to provide the highest level of clarity and overall optical performance. World-class Nikon objectives, including the renowned CFI60 infinity optical system, deliver brilliant images of breathtaking sharpness and clarity, from ultralow to the highest magnifications.

The initial melting process after blending glass raw materials



# It Starts with the Glass

Nikon has been developing optical glass since its inception in 1917, and to this day, wholly owns and formulates all of its glass. Optical glass starts as an ingot (shown on right) which is formed by blending rare earth elements and repeated melting, shaping and slow cooling to achieve a target refractive index. The glass ingots are precision-cut, polished and coated to produce lens elements for the objective.



## Mastering Excellence

The front lens of high-performance objectives is hand-polished by Nikon's most highly skilled experts (shown on left), a technique requiring more than a decade to master.

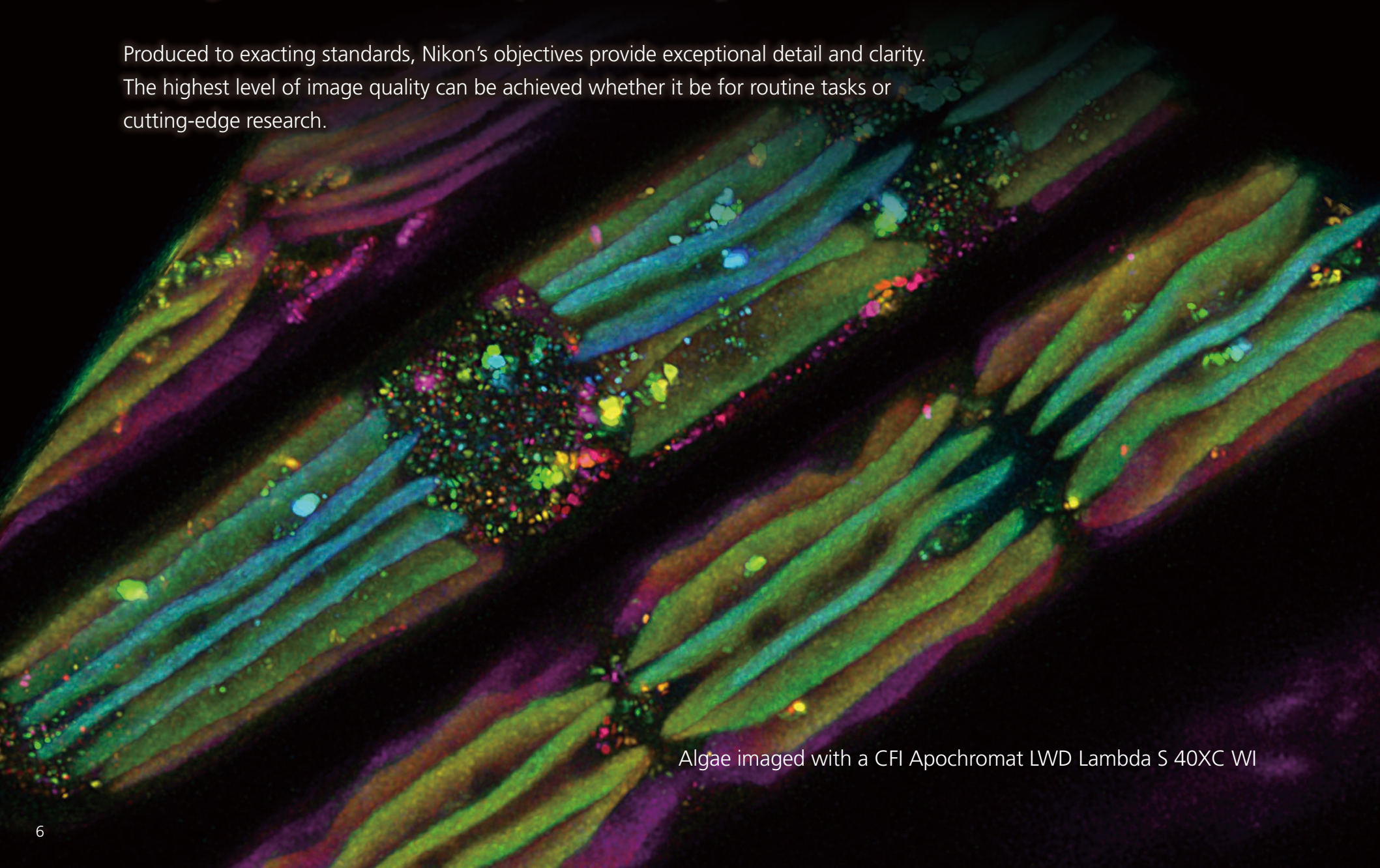
By controlling the entire manufacturing process from glass formulation to assembly and alignment of lens elements, Nikon ensures the highest quality and performance of its objectives.





# Objectives Inspired by Your Science

Produced to exacting standards, Nikon's objectives provide exceptional detail and clarity. The highest level of image quality can be achieved whether it be for routine tasks or cutting-edge research.



Algae imaged with a CFI Apochromat LWD Lambda S 40XC WI



## Cleared Tissue Imaging

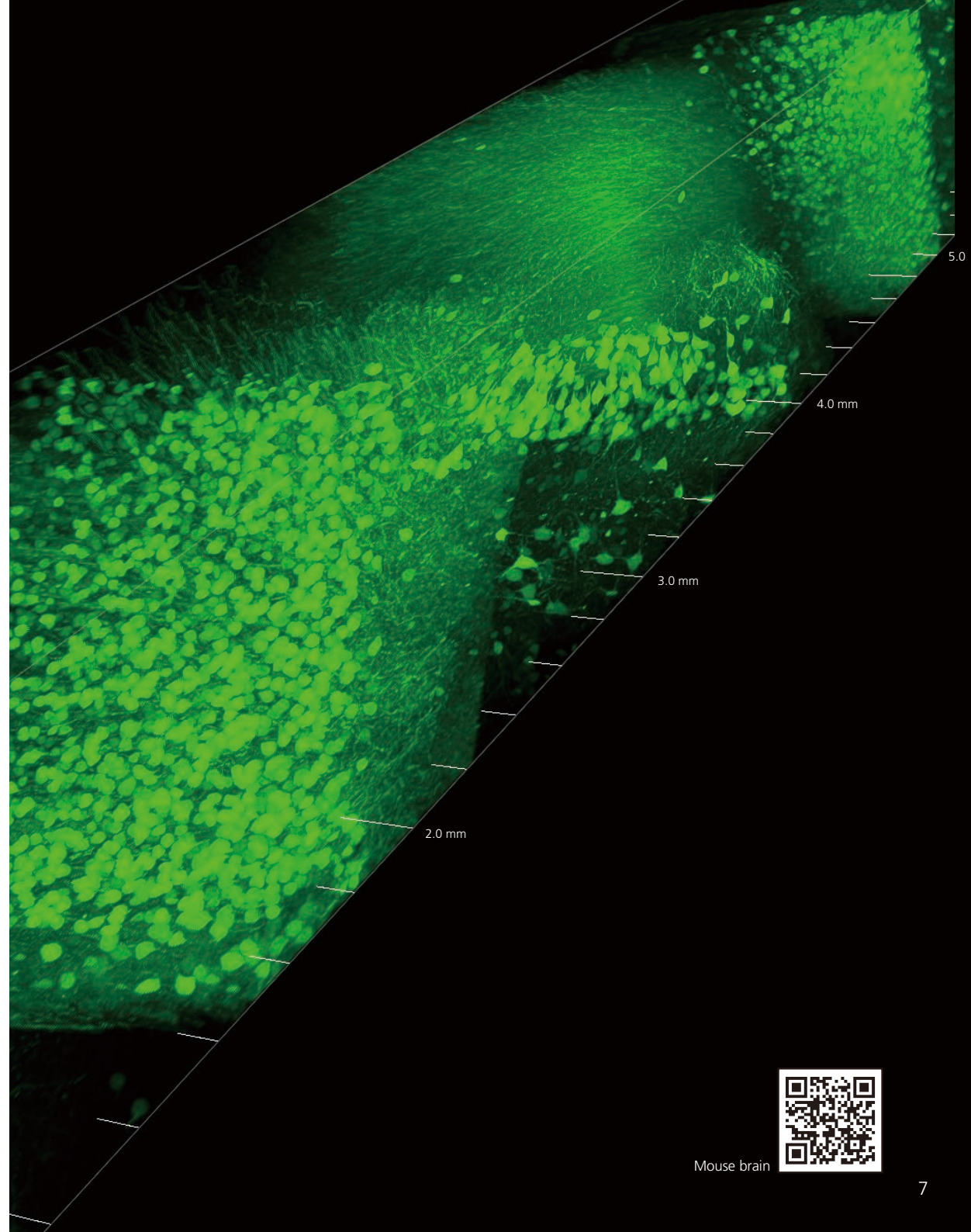


### CFI90 20XC Glyc

#### Designed for deep imaging of cleared tissues

The unique CFI90 design results in an incredibly high N.A. while maintaining a large field of view and ultra-long working distance. Incorporates a correction collar for compensating for different refractive indices of clearing agents.

- NA: 1.00, WD: 8.20 mm
- Chromatic aberration correction: from visible to IR
- High-transmittance Nano Crystal Coat
- Correction collar for spherical aberration correction



Mouse brain





## Cleared Tissue Imaging



### CFI Plan Apochromat 10XC Glyc

#### Compatible with a wide range of immersion media and clearing agents

In addition to water and immersion oil, this objective lens is compatible with a variety of tissue clearing agents. The lens also features chromatic aberration correction over a broad spectral range and is compatible with the Ti2 inverted microscope.

- NA: 0.50, WD: 5.50 mm (upright) / 2.00 mm (inverted)
- Chromatic aberration correction: from visible to IR
- High-transmittance Nano Crystal Coat
- Correction collar for spherical aberration correction



Zebrafish larva

## Multiphoton Imaging

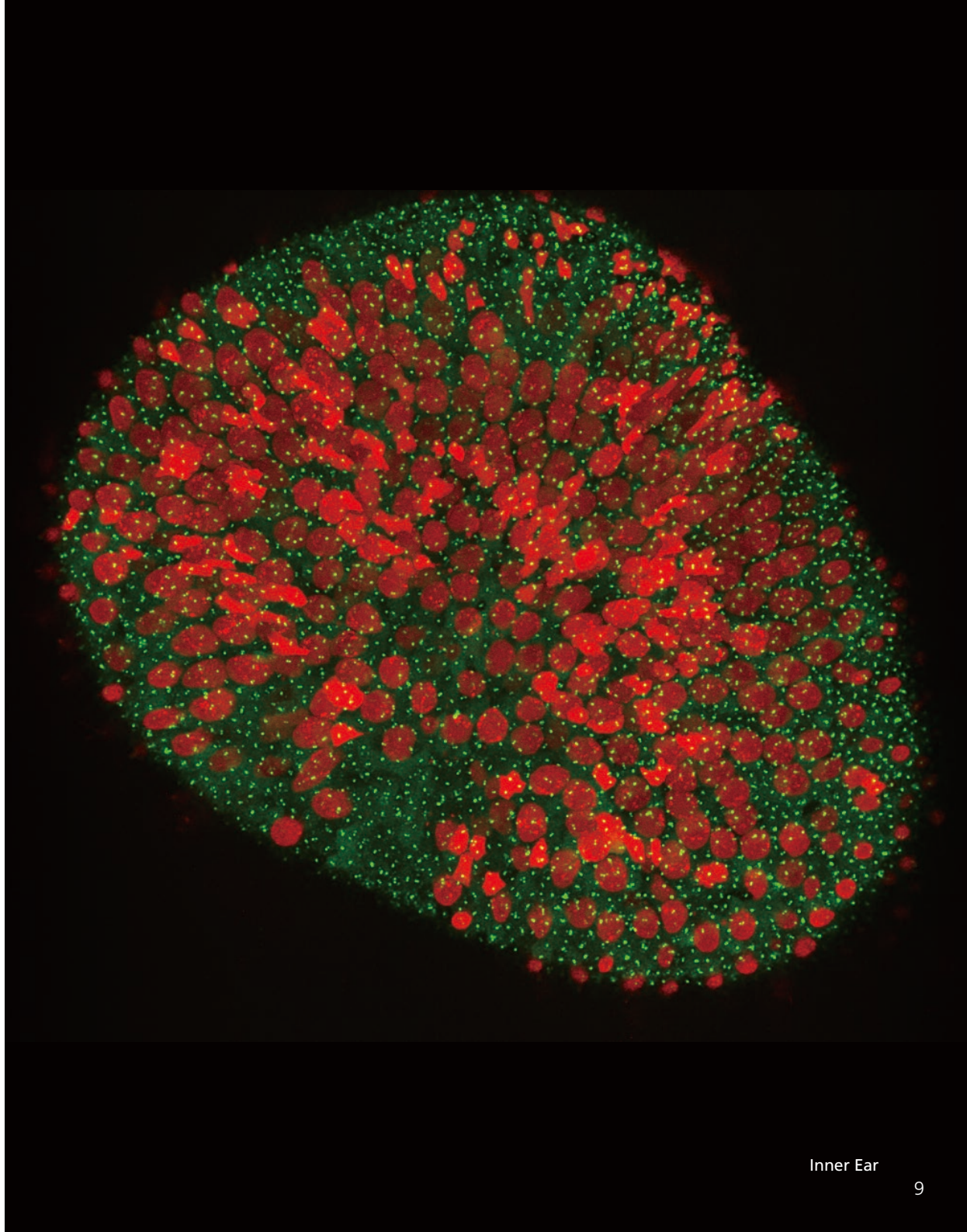


### CFI75 Apochromat 25XC W 1300

#### Developed for deep brain applications

Best in class objective for multiphoton and electrophysiology applications. Offers ultra-long working distance and incredibly high N.A. for exceptional results every time.

- NA: 1.10, WD: 2.00 mm
- Chromatic aberration correction: from visible to near IR
- High-transmittance Nano Crystal Coat
- Correction collar for spherical aberration correction





## Confocal Imaging

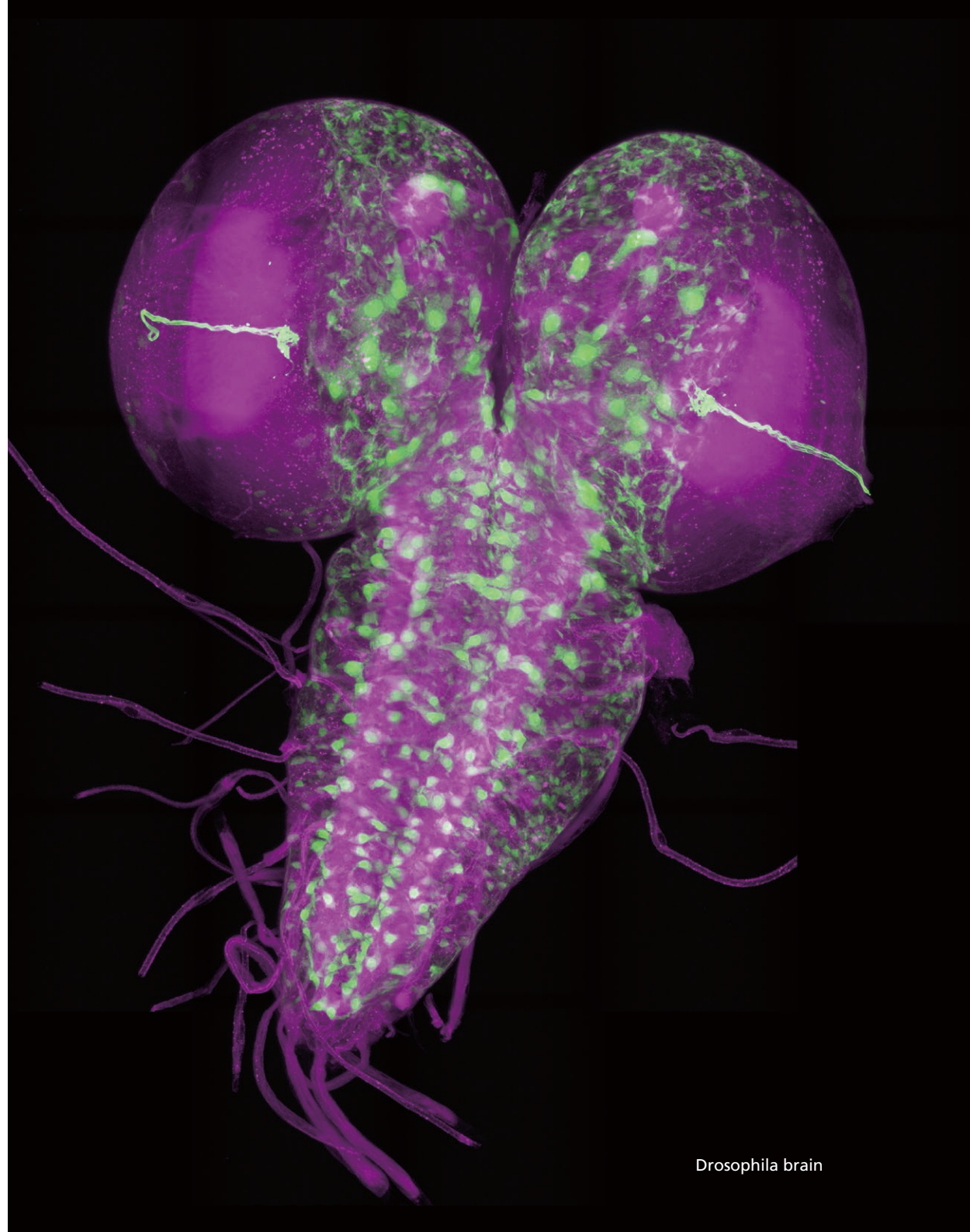


### CFI Apochromat LWD Lambda S 20XC WI

#### A versatile objective for a wide range of applications

Combines high N.A., long working distance and large field of view for imaging thick, live samples. Chromatic aberration correction from visible to IR for multiphoton imaging as well.

- NA: 0.95, WD: 0.95 mm
- Chromatic aberration correction: from visible to IR
- High-transmittance Nano Crystal Coat
- Correction collar for spherical aberration correction



Drosophila brain



## Confocal Imaging



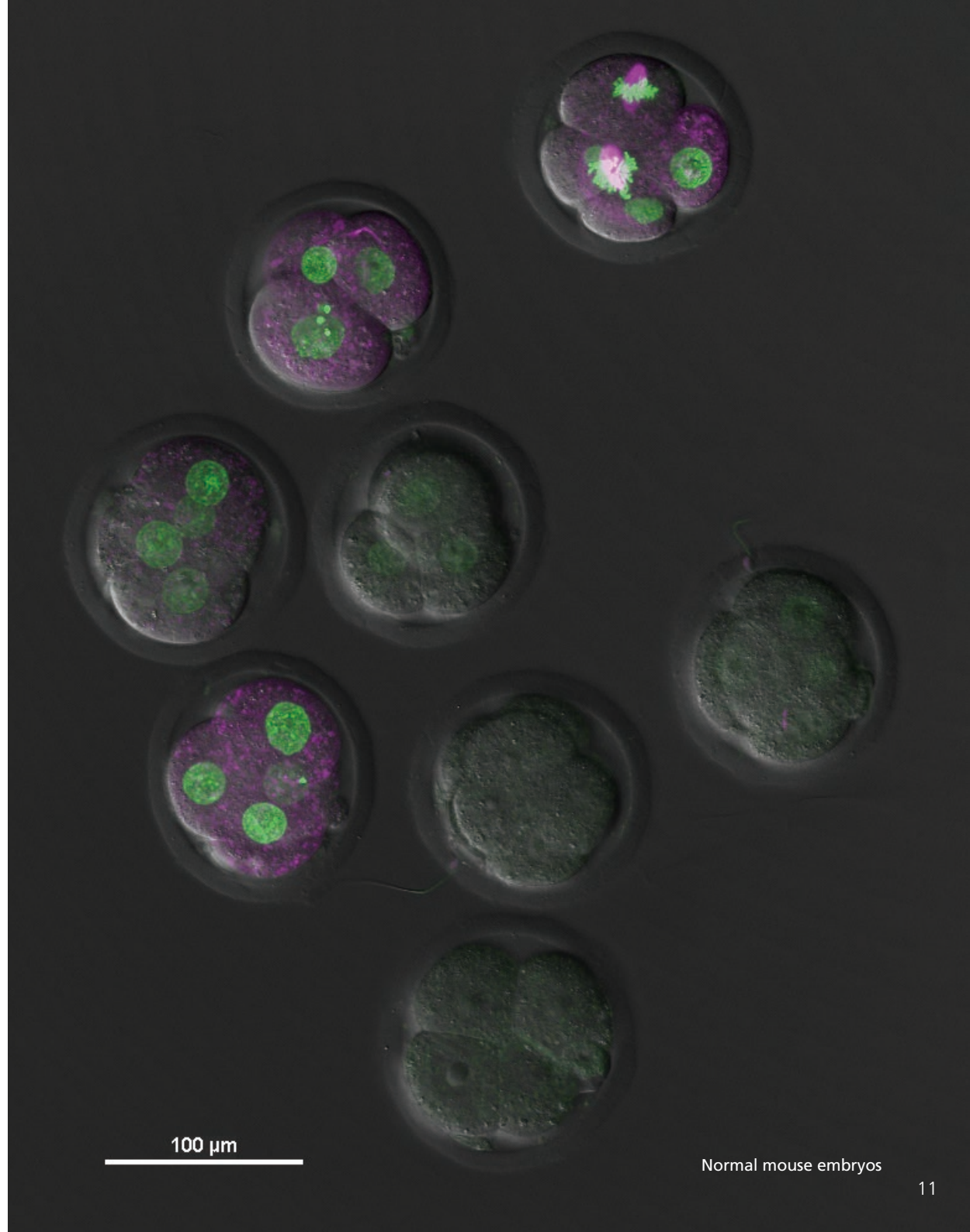
### CFI Plan Apochromat Lambda S 25XC Sil

#### Large FOV, high-resolution objective for imaging live samples

Silicone oil more closely matches the refractive index of live cells compared to water or oil, thereby minimizing spherical aberration issues common to live cell imaging. The 25XC Sil lens achieves exceptional resolving power even at great depths, making it well-suited for achieving bright, high-resolution images of thick specimens. Furthermore, its large field of view enables a greater amount of data and even whole organisms to be captured in a single image.

- NA: 1.05, WD: 0.55 mm
- Chromatic aberration correction: visible range
- High-transmittance Nano Crystal Coat
- Correction collar for spherical aberration correction

Image courtesy of: Dr. Yoshiteru Kai, Reproductive Medicine Research Center, YAMASHITA SHONAN YUME CLINIC



100  $\mu$ m

Normal mouse embryos

## Confocal Imaging

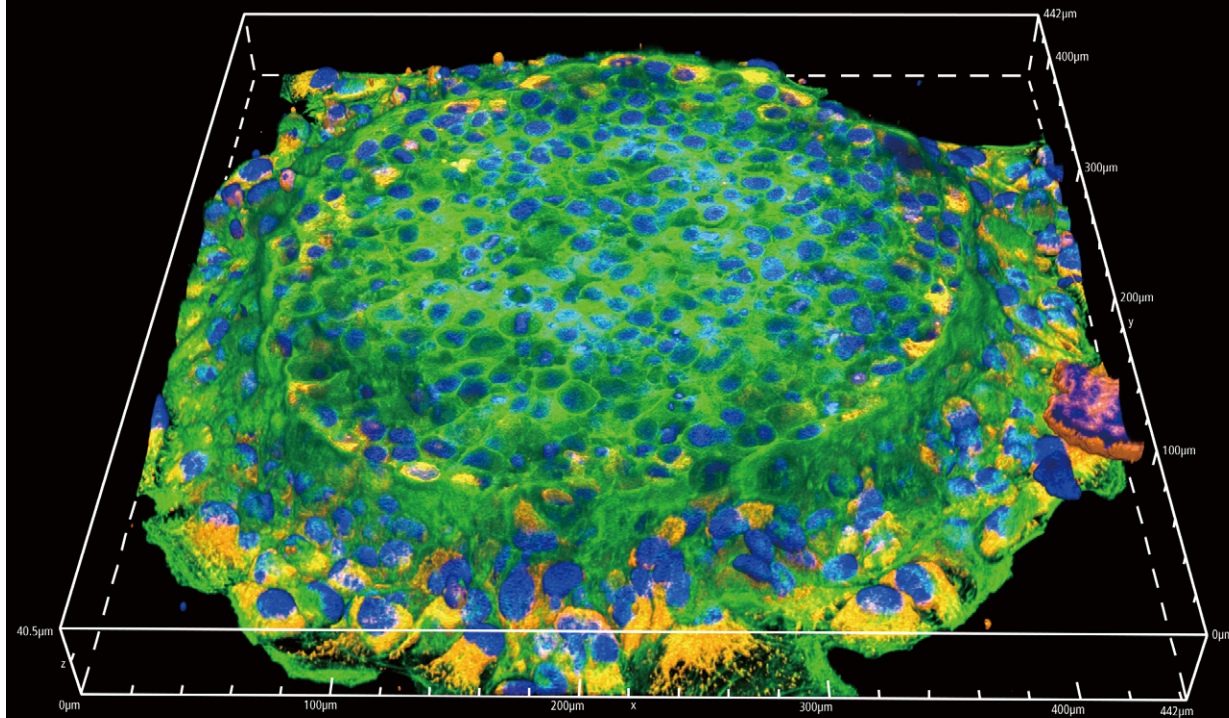


### CFI Plan Apochromat Lambda S 40XC Sil

#### High-resolution objective for extended time-lapse imaging

Silicone oil closely matches the refractive index of live cells thereby minimizing spherical aberration and providing brighter, higher-resolution images. Unlike water, silicone oil demonstrates minimal evaporation even at 37°C, thereby enabling extended, long-term time-lapse imaging experiments.

- NA: 1.25, WD: 0.30 mm
- Chromatic aberration correction: visible range
- High-transmittance Nano Crystal Coat
- Correction collar for spherical aberration correction



HeLa cell



## Confocal Imaging

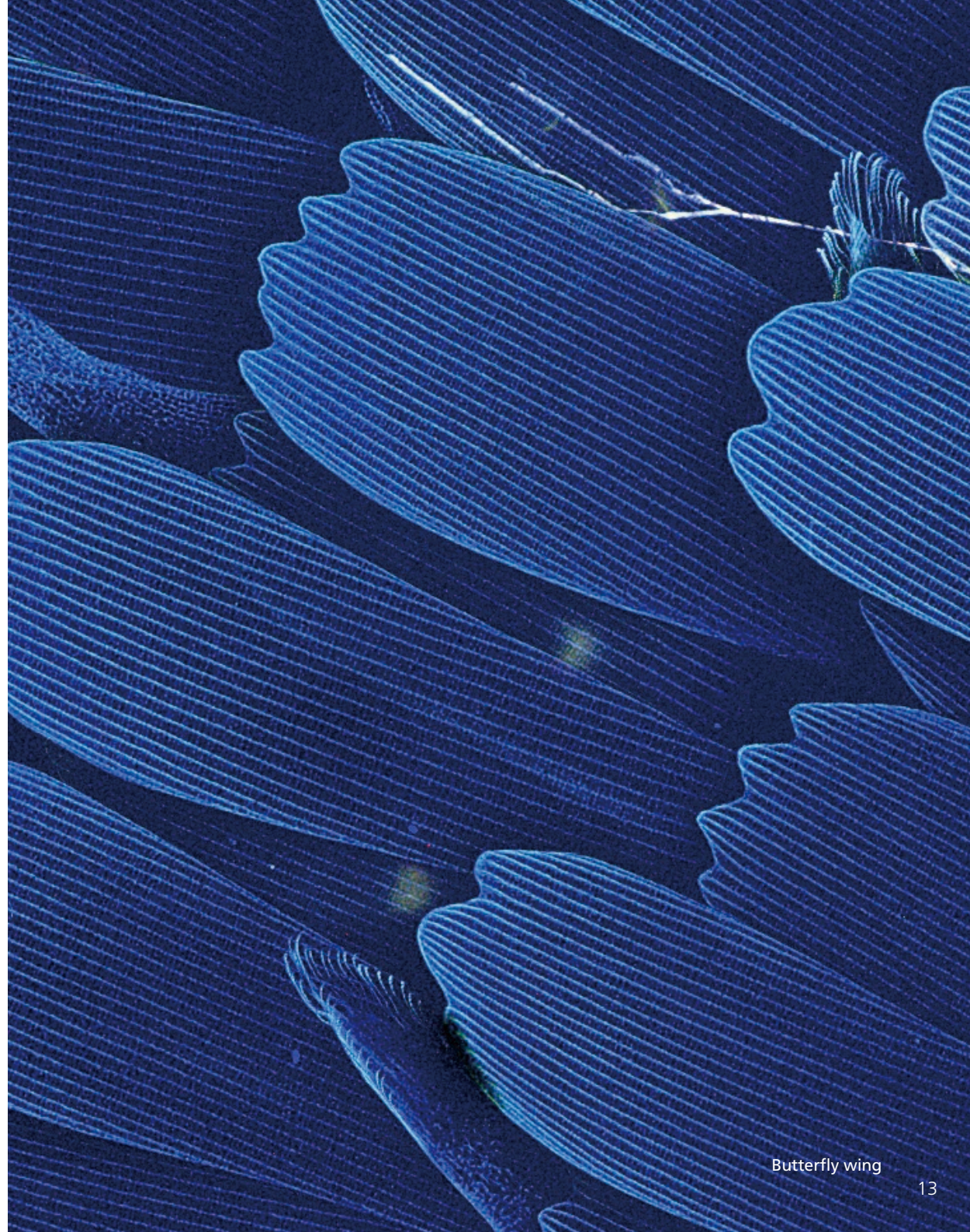


## CFI Plan Apochromat IR 60XC WI

### Incredible resolution and field flatness

This objective provides an NA of 1.27, the highest among 60X water immersion objectives, and achieves incredible field flatness. Corrects for chromatic aberration over a wide wavelength range up to IR, and supports various applications including multicolor live-cell confocal imaging, multiphoton imaging and laser tweezer applications.

- NA: 1.27, WD: 0.17 mm
- Chromatic aberration correction: from visible to IR
- High-transmittance Nano Crystal Coat
- Correction collar for spherical aberration correction





## Super-Resolution Imaging

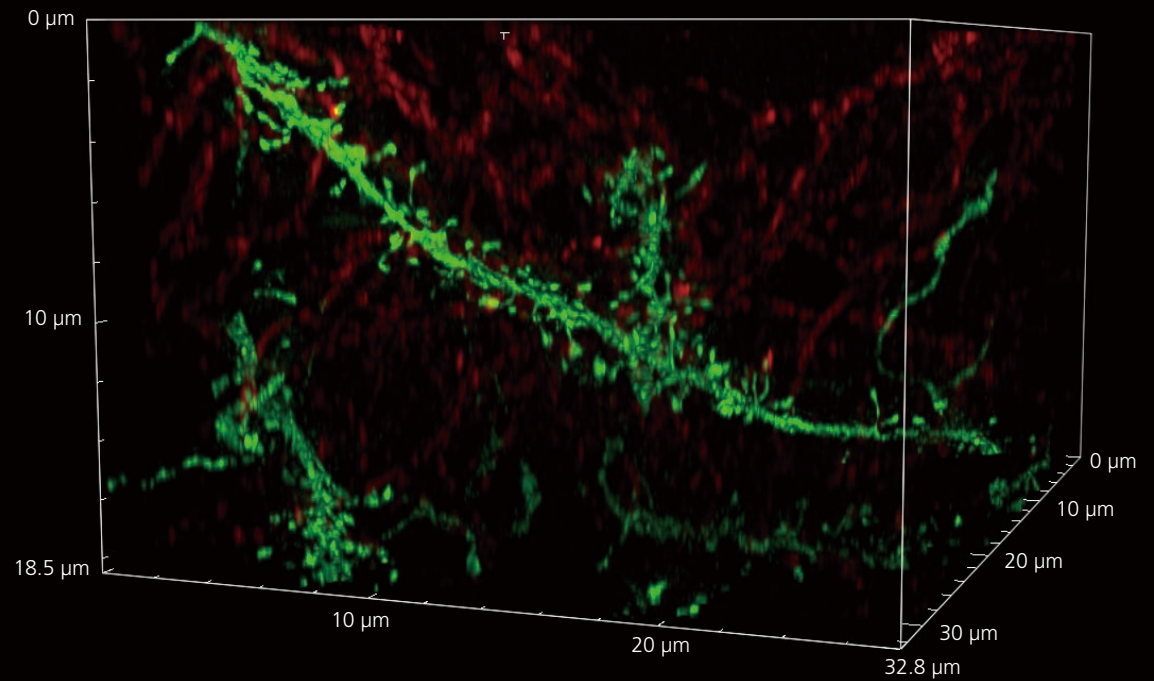


### CFI SR HP Plan Apochromat Lambda S 100XC Sil

#### High-resolution silicone oil immersion objective for imaging live samples

Silicone oil more closely matches the refractive index of live cells compared to water or oil, thereby minimizing spherical aberration issues common to live cell imaging. In addition, the 100XC Sil lens achieves exceptional resolving power even at greater depths, making it well-suited for super-resolution imaging of thicker specimen.

- NA: 1.35, WD: 0.30 mm
- Chromatic aberration correction: visible range
- High-transmittance Nano Crystal Coat
- Correction collar for spherical aberration correction



Dendrites

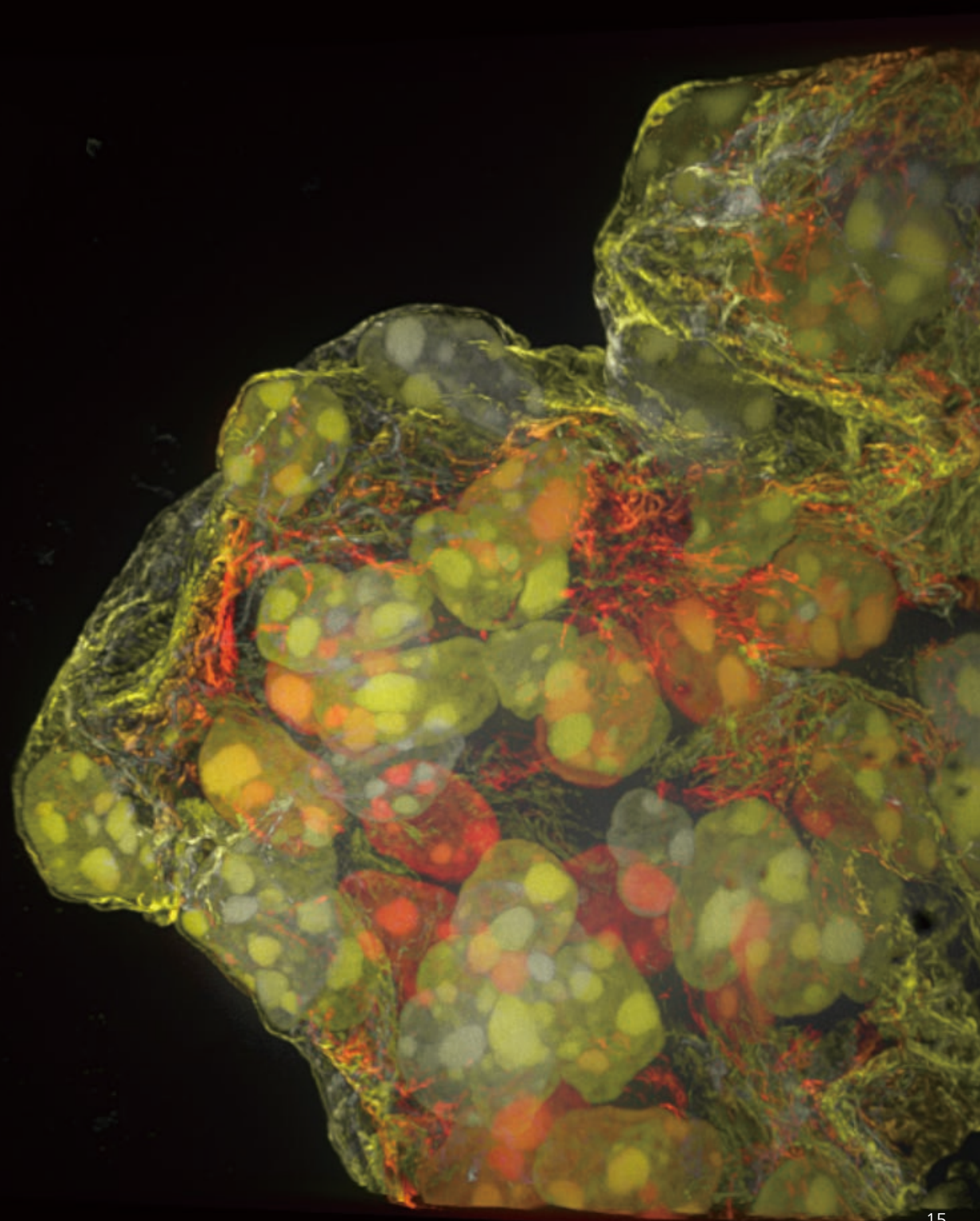
## Super-Resolution Imaging



## Auto Correction Collar

### Quick and accurate spherical aberration correction

Achieving the highest quality point spread function is critical for super-resolution imaging. The ACC quickly moves lens elements in the objective to an optimal position based on the acquired point spread function to minimize spherical aberration.





## High-Content Imaging

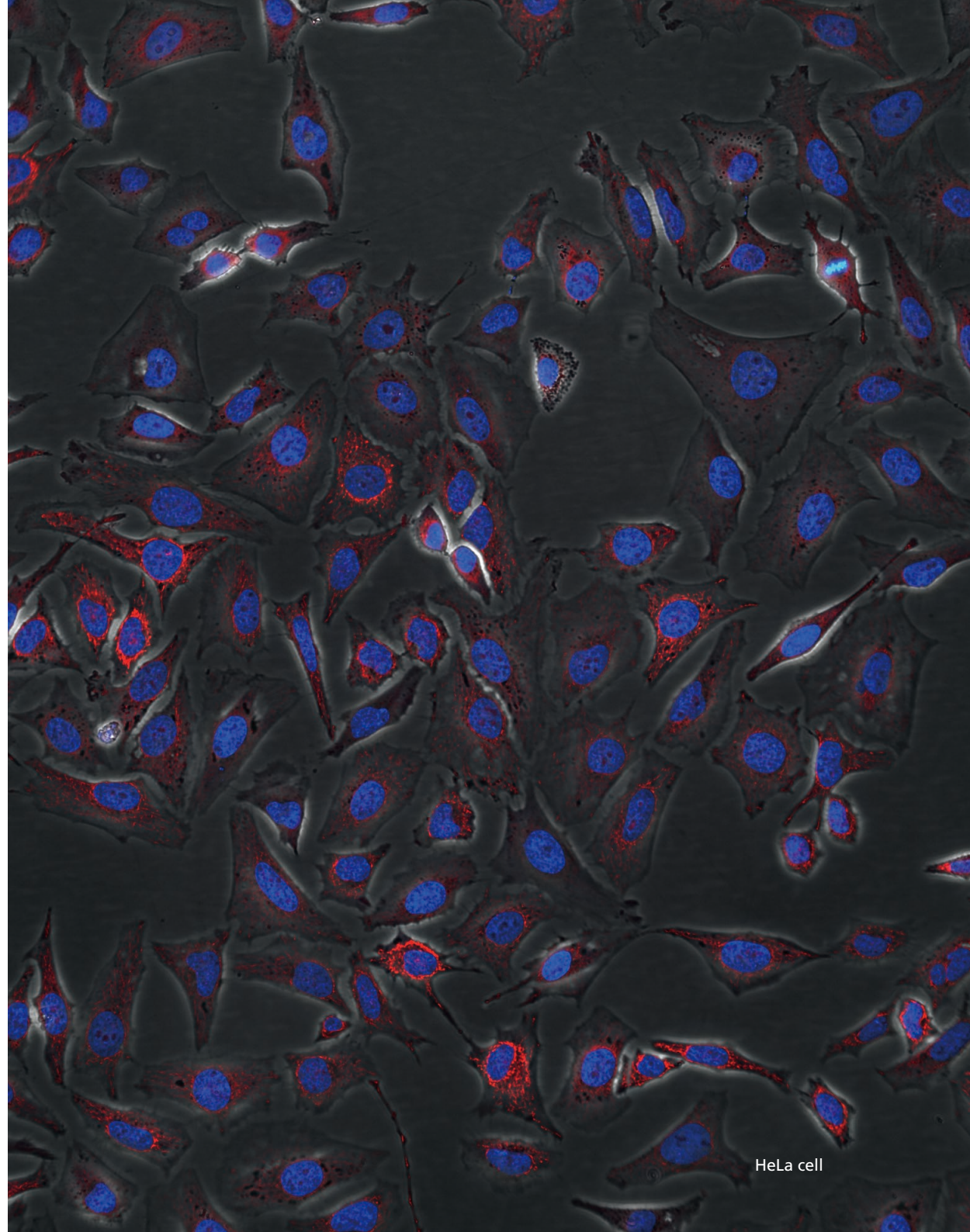


### CFI S Plan Fluor LWD ADM 20XC

#### High NA and long WD objective designed for HC applications

This objective is compatible with thick plastic-bottom dishes and well-plates, and enables high-resolution phase-contrast and fluorescence observations. Its large FOV improves throughput of high-content applications.

- NA: 0.70, WD: 2.30-1.30 mm
- Chromatic aberration correction: visible range
- Correction collar for spherical aberration correction



HeLa cell



## Pathological Examination

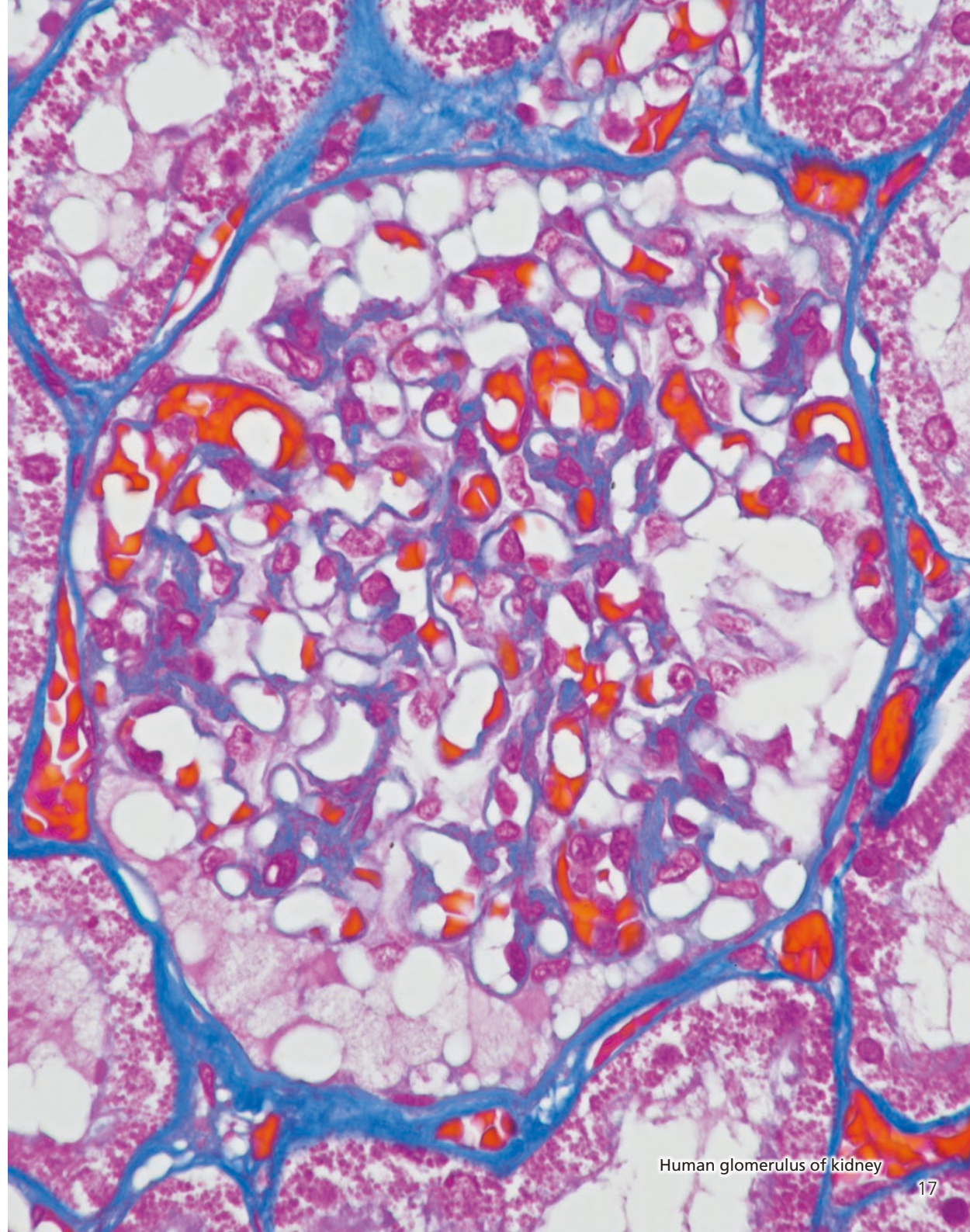


### CFI Plan Apochromat Lambda 40XC

#### High-clarity, large field-of-view imaging for Clinical applications

High N.A. combined with Nano Crystal Coat results in bright, high-contrast images. Provides chromatic aberration correction over a large spectral range and superior image flatness from edge-to-edge over its 25 mm FOV. An optimal lens for both fluorescence and brightfield imaging.

- NA: 0.95, WD: 0.25- 0.17 mm
- Chromatic aberration correction: from visible to near IR
- High-transmittance Nano Crystal Coat
- Correction collar for spherical aberration correction



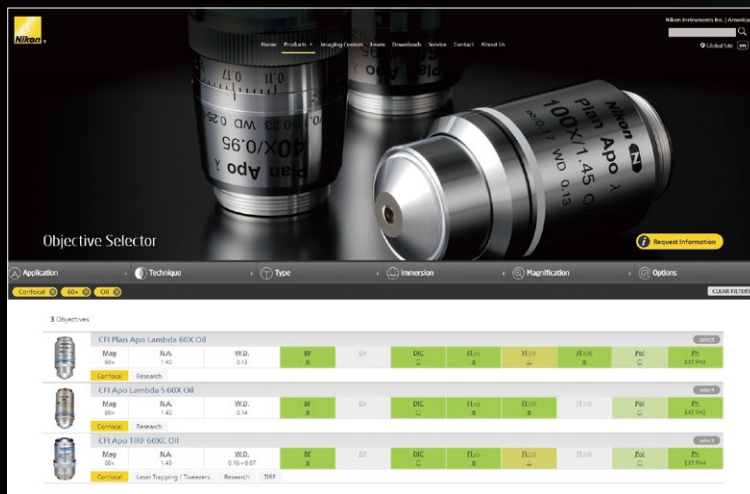
Human glomerulus of kidney



# A tool for finding the right objective

Nikon's online Objective Selector tool enables you to quickly and easily find the right objective for your application. Refine your search based on application, technique, objective class, immersion type, etc. Specifications for multiple objectives can be displayed in a single window for easy comparison.

<https://www.microscope.healthcare.nikon.com/selectors/objectives>



## OBJECTIVE SELECTOR



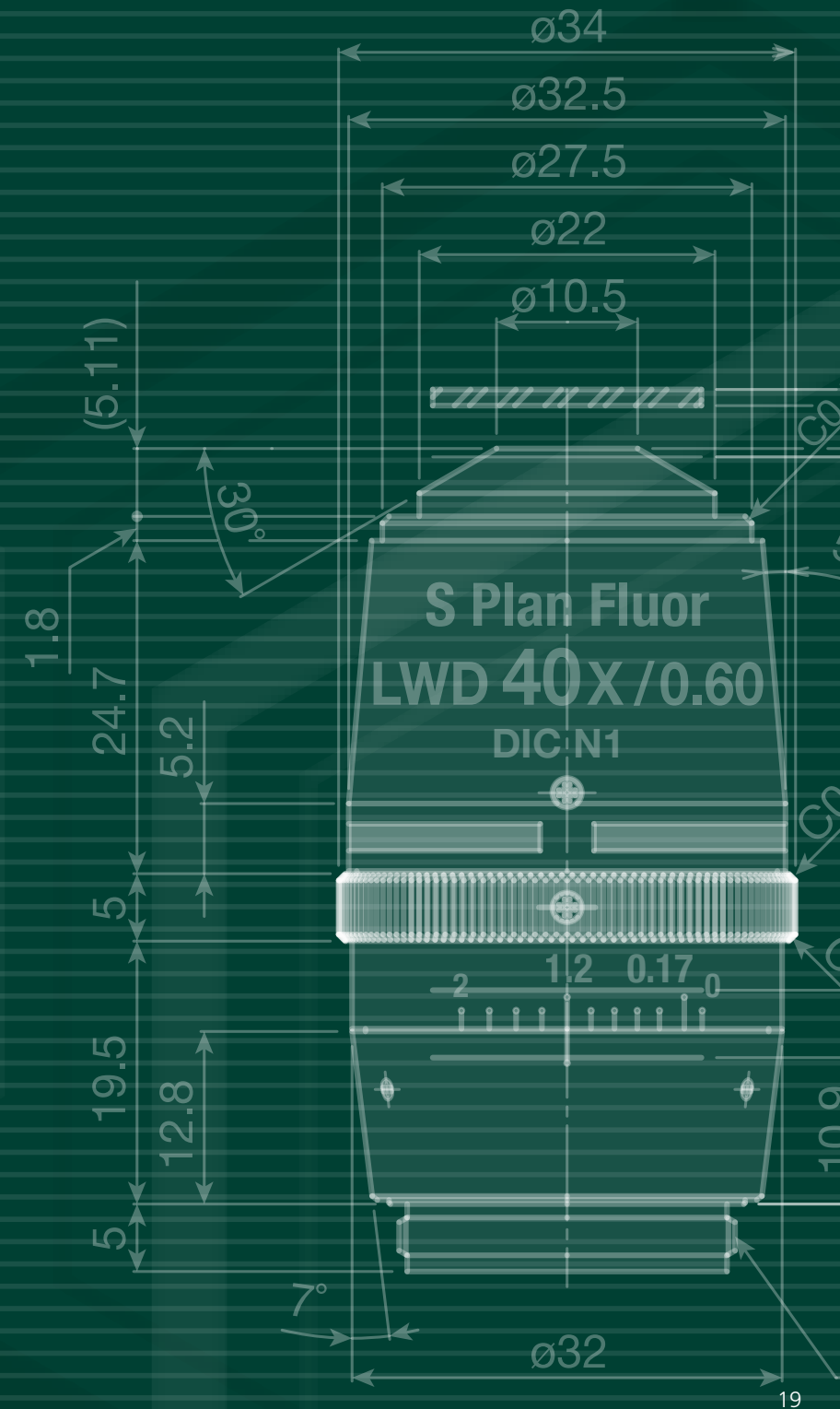
# For OEM and DIY

With over 100 years of experience in developing optical technology, Nikon offers a wide range of components that can fulfill almost any optical requirement.

Nikon develops products to the highest standards, from design to manufacture, to ensure we meet the needs of a wide variety of customers.

For detailed specifications including dimensions and transmission information, please refer to the following website.

<https://www.microscope.healthcare.nikon.com/products/oem>



Nikon offers a broad portfolio of objectives to meet your individual application needs. Explore some of the different objective series in the following pages.

Nikon offers a broad portfolio of objectives to meet your individual application needs. Explore some of the different objective series in the following pages.





## CFI Plan Apochromat Lambda series

This series of objectives incorporates "Nano crystal coat" technology which dramatically improves light transmission over a wide spectral range, including near-IR. Chromatic aberration correction (up to near-IR), resolution and image flatness of these objectives are unrivaled, ensuring the highest quality images for a variety of applications.



CFI Plan Apochromat Lambda 2X, 4X, 10X, 20X, 40XC, 60XC, 60X Oil and 100X Oil



CFI Plan Apochromat DM Lambda 20X, 40XC, 60XC, 60X Oil and 100X Oil

Use	Model	NA	W.D. (mm)	Cover glass thickness	Spring loaded	Brightfield	Darkfield	DIC	Phase contrast	Polarizing	Fluorescence			Ti2-E PFS
											UV	Visible light	NIR	
Brightfield (CFI Plan Apo)	Lambda 2X	0.10	8.50	—		○				○	●	○	○	
	Lambda 4X	0.20	20.00	—		○				○	●	○	○	●
	Lambda 10X	0.45	4.00	0.17		○	△	○		○	●	○	○	●
	Lambda 20X	0.75	1.00	0.17	✓	○	○●	○		○	●	○	○	●
	Lambda 40XC	0.95	0.25-0.17	0.11-0.23	✓	○	●	○		○	●	○	○	●
	Lambda 60XC	0.95	0.21-0.11	0.11-0.23	✓	○	●	○		○	●	○	○	●
	Lambda 60X Oil	1.40	0.13	0.17	✓	○		○	EXT PH3-60X	○	●	○	○	●
	Lambda 100X Oil	1.45	0.13	0.17		○		○	EXT PH3-100X EXT PH4-100X	○	●	○	○	●
	Lambda S 25XC Sil	1.05	0.55	0.11-0.23		○	●	○			●	○		●
	Lambda S 40XC Sil	1.25	0.30	0.13-0.21 (23°C) 0.15-0.23 (37°C)		○	●	○			●	○		●
	IR 60XC WI	1.27	0.18-0.16	0.15-0.19	✓	○		○	EXT PH3-60x	○	●	○	○	●
Phase contrast (CFI Plan Apo)	NCG 100X Oil	1.40	0.16	0	✓	○		○		○	●	○		
	DM Lambda 20X	0.75	1.00	0.17	✓	○	○●		○ PH2		●	○	○	●
	DM Lambda 40XC	0.95	0.25-0.17	0.11-0.23	✓	○	●		○ PH2		●	○	○	●
	DM Lambda 60XC	0.95	0.21-0.11	0.11-0.23	✓	○	●		○ PH2		●	○	○	●
	DM Lambda 60X Oil	1.40	0.13	0.17	✓	○	●		○ PH3		●	○	○	●
	DM Lambda 100X Oil	1.45	0.13	0.17	✓	○			○ PH3		●	○	○	●

**Glossary**  
C: with correction collar  
Oil: oil immersion  
WI: water immersion  
W: water dipping  
MI: multi immersion  
Glyc: glycerin immersion  
Sil: silicone oil immersion

**Cover glass thickness**  
— : can be used without cover glass  
0: use without cover glass

**Darkfield**  
Possible with the following  
△ : universal condenser (dry) and darkfield ring  
○ : above and darkfield condenser (dry)  
● : darkfield condenser (oil)

**Phase rings**  
PHL, PH1, PH2, PH3: condenser cassette modules.  
EXT PH3, EXT PH4: external phase contrast modules for Ti2-E.

**Fluorescence (UV)**  
● : possible with visible light that has a longer wavelength than the excitation light used for DAPI  
○ : suitable  
○ : recommended for best results  
340: high transmittance with an ultraviolet wavelength range of down to 340 nm

**Brightfield/DIC/Polarizing/Fluorescence (visible light)**

● : possible but not recommended  
○ : suitable  
○ : recommended for best results

**Ti2-E PFS**  
● : compatible with PFS

## CFI Plan Apochromat VC series

With their high degree of chromatic aberration correction and exceptional resolving power, these objectives are the perfect choice for multi-color fluorescence imaging as well as brightfield and DIC applications. In particular, axial chromatic aberration has been corrected in the short wavelength range, making these objectives highly effective for confocal applications.



CFI Plan Apochromat VC 100X Oil, 60XC WI and 20X

## CFI SR series/CFI HP series/CFI SR HP series

Strict adjustment and inspection minimize the SR objective's asymmetric aberration, optimizing it for the N-SIM S super-resolution microscope. The HP objective has improved axial chromatic aberration correction and is compatible with the high-power lasers required for the fast blinks of fluorophores under the N-STORM super-resolution microscope. The SR HP objective offers both excellent optical performance and high durability against high power laser excitation, eliminating the need to switch objectives between the N-SIM S and N-STORM systems. AC objectives support the Auto Correction function of the Ti2-E inverted microscope.



CFI SR Plan Apochromat IR 60XC WI, CFI HP Plan Apochromat VC 100X Oil, CFI SR HP Apochromat TIRF 100XC Oil and CFI SR HP Plan Apochromat Lambda S 100XC Sil

Use	Model	NA	W.D. (mm)	Cover glass thickness	Spring loaded	Brightfield	Darkfield	DIC	Phase contrast	Polarizing	Fluorescence			Ti2-E PFS
											UV	Visible light	NR	
Brightfield (CFI Plan Apo)	VC 20X	0.75	1.00	0.17	✓	◎	○●	○		○	●	◎		●
	VC 60XC WI	1.20	0.31-0.28	0.15-0.18	✓	◎		○	EXT PH3-60X	○	◎	◎		●
	VC 100X Oil	1.40	0.13	0.17	✓	◎		○	EXT PH3-100X	○	●	◎		●
Super-resolution (CFI SR Plan Apo)	IR 60XC WI	1.27	0.18-0.16	0.15-0.19		◎		○	EXT PH3-60X	○	○	◎	◎	●
	IR 60XAC WI	1.27	0.18-0.16	0.15-0.19		◎		○	EXT PH3-60X	○	○	◎	◎	●
Super-resolution (CFI HP Plan Apo)	VC 100X Oil	1.40	0.13	0.17	✓	◎		○	EXT PH3-100X	○	●	◎		●
Super-resolution (CFI SR HP Plan Apo)	Lambda S 100XC Sil	1.35	0.31-0.29 (23°C) 0.30-0.28 (37°C)	0.15-0.19		◎		○		○	◎	◎		●
Super-resolution (CFI SR HP Apo)	TIRF 100XC Oil	1.49	0.16-0.10 (23°C) 0.15-0.09 (37°C)	0.13-0.19 (23°C) 0.14-0.20 (37°C)		◎		○	EXT PH4-100X	○	●	◎		●
	TIRF 100XAC Oil	1.49	0.16-0.10 (23°C) 0.15-0.09 (37°C)	0.13-0.19 (23°C) 0.14-0.20 (37°C)		◎		○	EXT PH4-100X	○	●	◎		●



## CFI Apochromat Lambda S series

These high-numerical-aperture (NA) objectives provide chromatic aberration correction over wavelengths ranging from violet to near-infrared and are ideal for multicolor confocal imaging. The LWD Lambda S 20XC WI lens has a chromatic aberration correction range up to infrared. The transmittance of these lenses is enhanced over a wide wavelength range by utilizing Nano Crystal Coat technology.



CFI Apochromat Lambda S 40XC WI/60X Oil and CFI Apochromat LWD Lambda S 20XC WI/40XC WI

## CFI Apochromat TIRF series

These objectives boast an unprecedented NA of 1.49 (using a standard coverslip and immersion oil), the highest resolution among Nikon objectives. Correction collars enable optimization of point spread functions for varying imaging temperatures, correcting spherical aberration when imaging at 23 and 37 degrees Celsius.



CFI Apochromat TIRF 60XC Oil and 100XC Oil

## Multiphoton confocal objectives

These objectives are optimized for deep tissue imaging using a multiphoton confocal microscope, thanks to their ability to correct chromatic aberration up to near-IR range. They provide both long WD and high NA, as well as high transmittance. The Glyc models have a correction collar for the refraction index of immersion liquids, and are compatible with various tissue clearing reagents that are used in neuroscience research.



CFI Plan Apochromat 10XC Glyc, CFI90 20XC Glyc and CFI75 Apochromat 25XC W 1300

Use	Model	NA	W.D. (mm)	Cover glass thickness	Spring loaded	Brightfield	Darkfield	DIC	Phase contrast	Polarizing	Fluorescence			Ti2-E PFS
											UV	Visible light	NIR	
Confocal (CFI Apo)	LWD Lambda S 20XC WI	0.95	0.99-0.90	0.11-0.23		○	●	○		○		○	○	●
	LWD Lambda S 40XC WI	1.15	0.61-0.59	0.15-0.19		○	●	○	EXT PH3-40X	○	○	○		●
	Lambda S 40XC WI	1.25	0.20-0.16	0.15-0.19	✓	○		○	EXT PH3-40X	○	○	○		●
	Lambda S 60X Oil	1.40	0.14	0.17	✓	○		○	EXT PH3-60X	○	○	○		●
Evanescent (CFI Apo)	TIRF 60XC Oil	1.49	0.16-0.10 (23°C) 0.13-0.07 (37°C)	0.13-0.19 (23°C) 0.15-0.21 (37°C)		○		○	EXT PH4-60X	○	●	○		●
	TIRF 100XC Oil	1.49	0.16-0.10 (23°C) 0.15-0.09 (37°C)	0.13-0.19 (23°C) 0.14-0.20 (37°C)		○		○	EXT PH4-100X	○	●	○		●
Multiphoton confocal (CFI Plan Apo)	10XC Glyc	0.50	Upright: 5.50 Inverted: 2.00	0-0.17		○	○●					○	○	
Multiphoton confocal (CFI90)	20XC Glyc*	1.00	8.20	0		● **								○
Multiphoton confocal (CFI75 Apo)	25XC W*	1.10	2.00	0		○	●	○ ***		○	○	○	○	
	25XC W 1300*	1.10	2.00	0		○	●	○ ***		○	○	○	○	

\* Dedicated for FN1 and Ni-E focusing nosepiece type

\*\* Can only be used as a finder (chromatic aberration is corrected above 588 nm)

\*\*\* Also compatible with near-infrared DIC

## CFI Plan Fluor series

Featuring a high transmission rate, especially in the ultraviolet wavelength, and flatness of field, this series is designed for fluorescence observation and imaging. These objectives can function as multi-purpose objectives for brightfield, fluorescence, simple polarizing, and DIC observations.



CFI Plan Fluor 4X, 10X, 20X, 40X, 60XC and 100X Oil



CFI Plan Fluor DLL 10X, 20X, 40X and 100X Oil

## CFI Super Fluor series

This CFI Super Fluor series ensures an extra-high transmission rate of ultraviolet wavelengths down to 340nm for fluorochromes like indo-1 and fura-2. Also, these objectives have improved S/N ratios for short wavelengths and have high NA, making the fluorescence images they produce significantly sharper and brighter.



CFI Super Fluor 10X, 20X, 40XC and 40X Oil

Use	Model	NA	W.D. (mm)	Cover glass thickness	Spring loaded	Brightfield	Darkfield	DIC	Phase contrast	Polarizing	Fluorescence		Ti2-E PFS
											UV	Visible light	
Brightfield (CFI Plan Fluor)	4X	0.13	17.20	—		○				●	○	○	
	10X	0.30	16.00	0.17		○	△	○		○	○	○	●
	20X	0.50	2.10	0.17		○	○●	○		○	○	○	
	20XC MI	0.75	0.51-0.35 (oil) 0.51-0.34 (glycerin) 0.49-0.33 (water)	0-0.17	✓	○	○●	○		○	○	○	
	40X	0.75	0.66	0.17	✓	○	○●	○		○	○	○	●
	40X Oil	1.30	0.24	0.17	✓	○		○	EXT PH3-40X	○	○	○	●
	60XC	0.85	0.40-0.31	0.11-0.23	✓	○	●	○		○	○	○	
	60XS Oil	0.50-1.25	0.22	0.17	✓	○	○●	○	EXT PH3-60X	○	○	○	
	100X Oil	1.30	0.16	0.17	✓	○		○		○	○	○	●
Phase contrast (CFI Plan Fluor)	100XS Oil	0.50-1.30	0.16	0.17	✓	○	○●	○		○	○	○	
	DL 4XF	0.13	16.50	1.20		○			○ PHL		○	○	
	DLL 10X	0.30	16.00	0.17		○	△		○ PH1		○	○	●
	DL 10XF	0.30	15.20	1.20		○	△		○ PH1		○	○	●
	DLL 20X	0.50	2.10	0.17		○	○●		○ PH1		○	○	●
	DLL 40X	0.75	0.66	0.17	✓	○	○●		○ PH2		○	○	●
	DLL 100X Oil	1.30	0.16	0.17	✓	○			○ PH3		○	○	●
	DM 40X	0.75	0.66	0.17	✓	○	○●		○ PH2		○	○	
	BM 40X	0.75	0.66	0.17	✓	○	○●		○ PH2		○	○	
Apodized phase contrast (CFI Plan Fluor)	ADH 100X Oil	1.30	0.16	0.17	✓	○			○ PH3		○	○	●
Brightfield (CFI Super Fluor)	4X	0.20	15.50	—		○				●	○ 340	○	●
	10X	0.50	1.10	0.17	✓	○	○●	○		●	○ 340	○	●
	20X	0.75	1.00	0.17	✓	○	○●	○		●	○ 340	○	●
	40XC	0.90	0.34-0.26	0.11-0.23	✓	○	●	○		●	○ 340	○	●
	40X Oil	1.30	0.19	0.17	✓	○		○		●	○ 340	○	●
	100XS Oil	0.50-1.30	0.20	0.17	✓	○	○●			●	○ 340	○	



## CFI S Plan Fluor series

The broadband multilayer coating realizes high transmittance from ultraviolet to near-infrared wavelengths, with superior chromatic correction. The correction collar allows these objectives to be used with a diverse range of culture vessels and specimen thicknesses. High-quality images with no aberrations can be obtained under a broad range of illumination techniques.



CFI S Plan Fluor LWD 20XC and LWD ADM 20XC



CFI S Plan Fluor ELWD 20XC, 40XC and 60XC



CFI S Plan Fluor ELWD ADM 20XC, 40XC and ADL 60XC

## Nikon Advanced Modulation Contrast (NAMC) series

Nikon has developed dedicated objectives for advanced modulation contrast. Colorless and transparent samples can be observed in high relief with a plastic dish, which is not possible in DIC observation. The direction of contrast can be matched to S Plan Fluor ELWD NAMC objectives, thereby allowing optimal contrast selection for techniques like microinjection and ICSI.



CFI S Plan Fluor ELWD NAMC 20XC and 40XC



CFI NAMC 10XF, CFI LWD NAMC 20XF and 40XC

Use	Model	NA	W.D. (mm)	Cover glass thickness	Spring loaded	Brightfield	Darkfield	DIC	Phase contrast	Polarizing	Fluorescence		Ti2-E PFS
											UV	Visible light	
Brightfield (CFI S Plan Fluor)	LWD 20XC	0.70	2.30-1.30	0-1.80		⊙	○●	○		○	⊙	⊙	●
	ELWD 20XC	0.45	8.20-6.90	0-2.00		⊙	○●	○		○	⊙	⊙	●
	ELWD 40XC	0.60	3.60-2.80	0-2.00		⊙	○●	○		○	⊙	⊙	●
	ELWD 60XC	0.70	2.60-1.80	0.10-1.30		⊙	○●	○		○	⊙	⊙	●
Apodized phase contrast (CFI S Plan Fluor)	LWD ADM 20XC	0.70	2.30-1.30	0-1.80		○	○●		⊙ PH2		○	○	●
	ELWD ADM 20XC	0.45	8.20-6.90	0-2.00		○	○●		⊙ PH1		○	○	●
	ELWD ADM 40XC	0.60	3.60-2.80	0-2.00		○	○●		⊙ PH2		○	○	●
	ELWD ADL 60XC	0.70	2.60-1.80	0.10-1.30		○	○●		⊙ PH2		○	○	●
Advanced modulation contrast (CFI S Plan Fluor)	ELWD NAMC 20XC	0.45	8.20-6.90	0-2.00		○					○	○	
	ELWD NAMC 40XC	0.60	3.60-2.80	0-2.00		○					○	○	
Advanced modulation contrast (CFI)	NAMC 10XF	0.25	6.20	1.20		○							●
	LWD NAMC 20XF	0.40	3.10	1.20		○							●
	LWD NAMC 40XC	0.55	2.70-1.70	0-2.00		○							●

## CFI Plan Achromat series

CFI Plan Achromat series provides incredible image flatness, with chromatic aberration corrected throughout the entire visible spectrum. These objectives are suitable not only for observation but also for capturing images.



CFI Plan 1X, 2X, 4X, 10X, 20X, 40X and 100X Oil



CFI Plan DL 10X, 20X, 40X and 100X Oil

## Water Dipping Series

Sharper tips and broad approach angles provide improved accessibility for manipulator control. Aberrations are corrected even in the infrared range for high-magnification objectives, making them suitable for multi-photon imaging using infrared light.



CFI Plan Fluor 10XW, CFI75 LWD 16XW, CFI Apochromat NIR 40XW/60XW and CFI Plan 100XC W

Use	Model	NA	W.D. (mm)	Cover glass thickness	Spring loaded	Brightfield	Darkfield	DIC	Phase contrast	Polarizing	Fluorescence		Near- infrared DIC
											UV	Visible light	
Brightfield (CFI Plan)	1X	0.04	3.20	—		⊙				●		●	
	2X	0.06	7.50	—		⊙				●		●	
	4X	0.10	30.00	—		⊙				●		○	
	10X	0.25	10.50	—		⊙	△			●		○	
	20X	0.40	1.20	0.17		⊙	○●			●		○	
	40X	0.65	0.56	0.17	✓	⊙	○●			●		○	
	50X Oil	0.90	0.35/0.18	—/0.17	✓	⊙	●			●		○	
	100X Oil	1.25	0.20	0.17	✓	⊙				●		○	
	NCG 40X	0.65	0.48	0	✓	⊙	○●			●		○	
	NCG 100X	0.90	1.00	0	✓	⊙	●			●		○	
Phase contrast (CFI Plan)	DL 10X	0.25	10.50	—		○	△		⊙ PH1	●		●	
	DL 20X	0.40	1.20	0.17		○	○●		⊙ PH1	●		●	
	DL 40X	0.65	0.56	0.17	✓	○	○●		⊙ PH2	●		●	
	DL 100X Oil	1.25	0.20	0.17	✓	○			⊙ PH3	●		●	
DIC (CFI Plan Fluor)	10X W	0.30	3.50	0		⊙	△	○		○	○	○	○
IR-DIC (CFI Apo)	NIR 40X W	0.80	3.50	0		⊙	●	○		○	●	○	○
	NIR 60X W	1.00	2.80	0		⊙	●	○		○		○	○
DIC (CFI Plan)	100XC W	1.10	2.50	0		⊙	●	○		○		○	○
DIC (CFI75)	LWD 16X W *	0.80	3.00	0		⊙	●	○		○	○	○	○

\* Dedicated for FN1 and Ni-E focusing nosepiece type



## CFI Achromat series

This series of objectives provide dramatic correction for chromatic aberration, spherical aberration and coma. Image flatness is significantly improved.

Nikon specifically developed ADL series for phase contrast observations by using its proprietary apodization process to improve the objective's phase ring. Imaging cell division is often impeded by unwanted halos due to the sample thickness. ADL mitigates this effect for clearer observation of mitotic events.



CFI 4X, 10X, CFI LWD 20X, CFI 40X and 100X Oil



CFI DL 10X, CFI LWD DL 20X, CFI DL 40X and 100X Oil



CFI ADL 10XF, CFI LWD ADL 20XF, 40XF and 40XC

Use	Model	NA	W.D. (mm)	Cover glass thickness	Spring loaded	Brightfield	Darkfield	DIC	Phase contrast	Polarizing	Fluorescence		Ti2-E PFS
											UV	Visible light	
Brightfield (CFI)	4X	0.10	30.00	—		○				●		○	
	10X	0.25	7.00	—		○	△			●		○	
	LWD 20X	0.40	3.90	0.17		○	○●			●		○	
	40X	0.65	0.65	0.17	✓	○	○●			●		○	
	LWD 40XC	0.55	2.70-1.70	0-2.00		○	○●			●		○	
	60X	0.80	0.30	0.17	✓	○	●			●		○	
	100X Oil	1.25	0.23	0.17	✓	○				●		○	
Phase contrast (CFI)	100XS Oil	0.50-1.25	0.23	0.17	✓	○	○●			●		○	
	DL 10X	0.25	7.00	—		○	△		◎ PH1	●		●	
	LWD DL 20X	0.40	3.90	0.17		○	○●		◎ PH1	●		●	
	LWD DL 20XF	0.40	3.10	1.20		○			◎ PH1	●		●	
	DL 40X	0.65	0.65	0.17	✓	○	○●		◎ PH2	●		●	
	LWD DL 40XC	0.55	2.70-1.70	0-2.00		○	○●		◎ PH2	●		●	
	DL 100X Oil	1.25	0.23	0.17	✓	○			◎ PH3	●		●	
Apodized phase contrast (CFI)	BM 10X	0.25	7.00	0.70		○			◎ PH1	●		●	
	ADL 10XF	0.25	6.20	1.20		○			◎ PH1	●		●	
	LWD ADL 20XF	0.40	3.10	1.20		○			◎ PH1	●		●	
	LWD ADL 40XF	0.55	2.10	1.20		○			◎ PH1	●		●	
	LWD ADL 40XC	0.55	2.70-1.70	0-2.00		○	○●		◎ PH2	●		●	

Specifications and equipment are subject to change without any notice or obligation on the part of the manufacturer. November 2020 © 2018-20 NIKON CORPORATION



**WARNING**

TO ENSURE CORRECT USAGE, READ THE CORRESPONDING MANUALS CAREFULLY BEFORE USING YOUR EQUIPMENT.

Company names and product names appearing in this brochure are their registered trademarks or trademarks.  
N.B. Export of the products\* in this brochure is controlled under the Japanese Foreign Exchange and Foreign Trade Law. Appropriate export procedure shall be required in case of export from Japan.  
\*Products: Hardware and its technical information (including software)



**NIKON CORPORATION**

Shinagawa Intercity Tower C, 2-15-3, Konan, Minato-ku, Tokyo 108-6290, Japan  
phone: +81-3-6433-3705 fax: +81-3-6433-3785  
<https://www.healthcare.nikon.com/en/>

ISO 14001 Certified  
for NIKON CORPORATION

**NIKON INSTRUMENTS INC.**

1300 Walt Whitman Road, Melville, N.Y. 11747-3064, U.S.A.  
phone: +1-631-547-8500; +1-800-52-NIKON (within the U.S.A. only)  
fax: +1-631-547-0299  
<https://www.microscope.healthcare.nikon.com/>

**NIKON INSTRUMENTS EUROPE B.V.**

Tripolis 100, Burgerweeshuispad 101, 1076 ER Amsterdam, Netherlands  
phone: +31-20-7099-000 fax: +31-20-7099-298  
[https://www.microscope.healthcare.nikon.com/en\\_EU/](https://www.microscope.healthcare.nikon.com/en_EU/)

**NIKON INSTRUMENTS (SHANGHAI) CO., LTD.**

CHINA phone: +86-21-6841-2050 fax: +86-21-6841-2060  
(Beijing branch) phone: +86-10-5831-2028 fax: +86-10-5831-2026  
(Guangzhou branch) phone: +86-2-3882-0551 fax: +86-2-3882-0580  
[https://www.microscope.healthcare.nikon.com/zh\\_CN/](https://www.microscope.healthcare.nikon.com/zh_CN/)

**NIKON CANADA INC.**

CANADA phone: +1-905-625-9910 fax: +1-905-602-9953

**NIKON FRANCE S.A.S.**

FRANCE phone: +33-1-4516-4516 fax: +33-1-4516-4505

**NIKON GMBH**

GERMANY phone: +49-211-9414-888 fax: +49-211-9414-322

**NIKON INSTRUMENTS S.p.A.**

ITALY phone: +39-055-300-9601 fax: +39-055-300-993

**NIKON GMBH SWITZERLAND**

SWITZERLAND phone: +41-43-277-2867 fax: +41-43-277-2861

**NIKON UK LTD.**

UNITED KINGDOM phone: +44-208-247-1717 fax: +44-208-541-4584

**NIKON CEE GMBH**

AUSTRIA phone: +43-1-972-6111 fax: +43-1-972-6111-40

**NIKON SINGAPORE PTE LTD**

SINGAPORE phone: +65-6559-3651 fax: +65-6559-3668

**NIKON INSTRUMENTS KOREA CO., LTD.**

KOREA phone: +82-2-6288-1900 fax: +82-2-555-4415