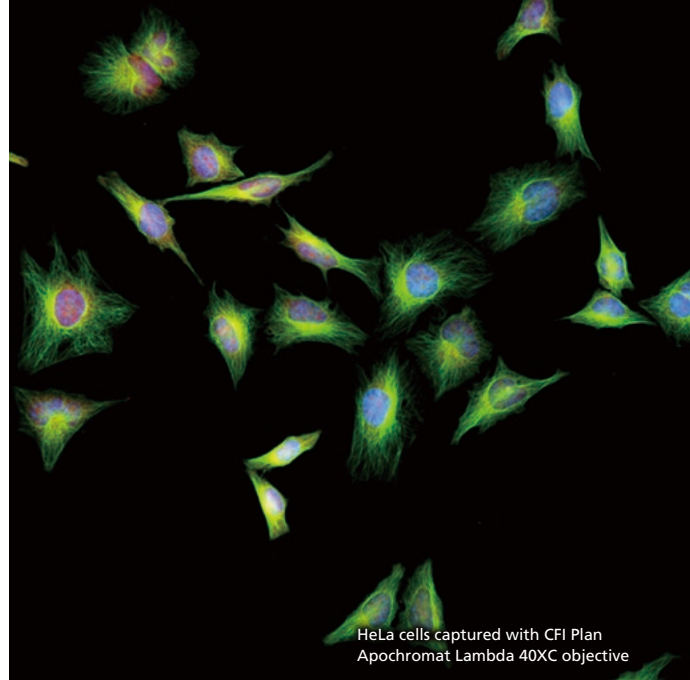




New LED light source suitable for fluorescence observation



HeLa cells captured with CFI Plan Apochromat Lambda 40XC objective



D-LEDI

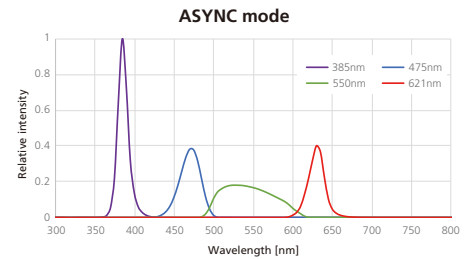
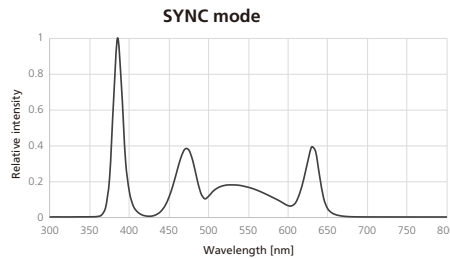
Fluorescence LED Illumination system

Highly efficient and bright fluorescent LED illumination

The D-LEDI can be attached directly to a fluorescent device, preventing the loss of light intensity the normally occurs with fiber-optic light sources.

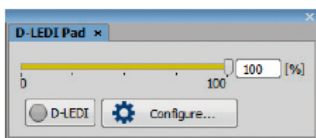
Wavelength intensity control

- Equipped with four types of LEDs (385 nm, 475 nm, 550 nm and 621 nm).
- Using the included controller, the user can simultaneously turn the lights of individual, multiple, or all wavelengths on or off.

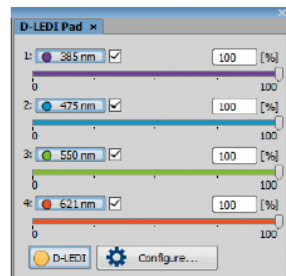


Control using NIS-Elements software

- The light intensity of each wavelength can be controlled while maintaining wavelength intensity ratios.
- The emission of excitation light can be synchronized with image acquisition, which is effective for time-lapse imaging.



Simultaneous lighting



Individual light adjustment

Maintenance-free

The built-in LEDs have a long life of approximately 20,000 hours, eliminating the need for frequent lamp replacement, which was required when using a mercury lamp light source.

Alignment free

The LEDs of this light source are rigorously adjusted during manufacture, and do not require the centering process that was required with a mercury lamp light source.

Change your microscope to an LED model

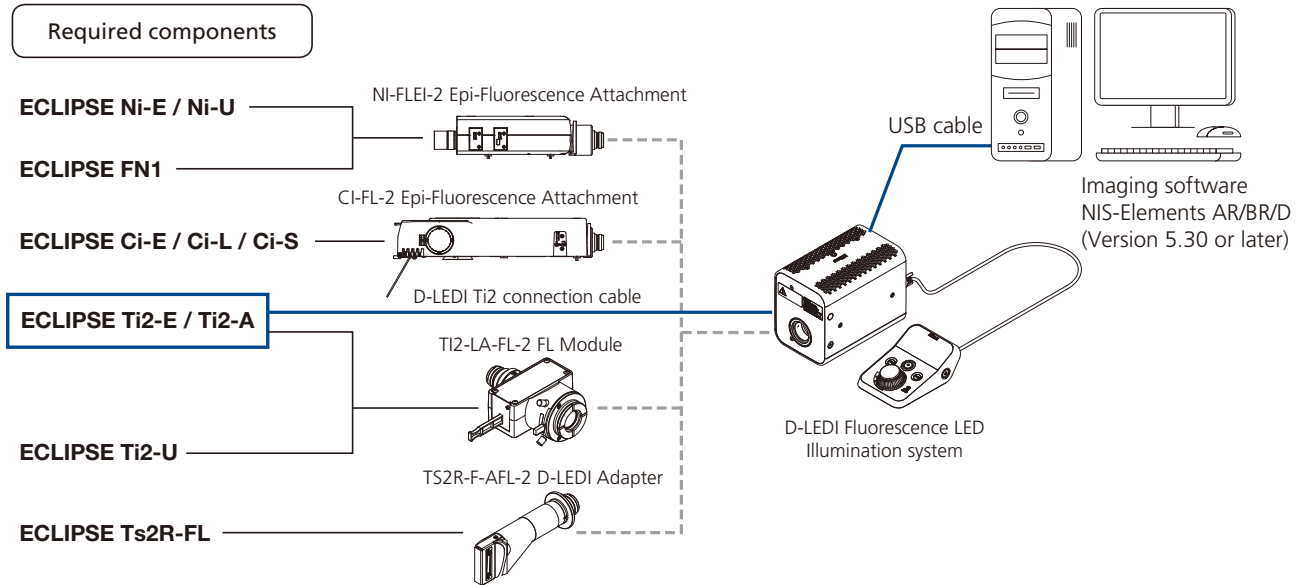
The D-LEDI fluorescence LED illumination system can be easily attached to the fluorescent device of your current Nikon ECLIPSE Ni-E, Ni-U, Ci-E, Ci-S, Ci-L and FN1 microscopes using the D-LEDI Retrofit Adapter.

D-LEDI Retrofit Adapter

As well as current Nikon fluorescence microscopes, the discontinued ECLIPSE Ti, 90i, 80i, 55i and 50i microscopes are also compatible with this light source using the D-LEDI Retrofit Adapter. Please contact your nearest dealer for details.



D-LEDI Retrofit Adapter



Attached to Ni-U



Attached to Ti2-U

N.B. Export of the products* in this brochure is controlled under the Japanese Foreign Exchange and Foreign Trade Law. Appropriate export procedure shall be required in case of export from Japan.
*Products: Hardware and its technical information (including software)

	WARNING	TO ENSURE CORRECT USAGE, READ THE CORRESPONDING MANUALS CAREFULLY BEFORE USING YOUR EQUIPMENT.
--	----------------	--

Specifications and equipment are subject to change without any notice or obligation on the part of the manufacturer. February 2021 ©2021 NIKON CORPORATION



NIKON CORPORATION

Shinagawa Intercity Tower C, 2-15-3, Konan, Minato-ku, Tokyo 108-6290, Japan
phone: +81-3-6433-3705 fax: +81-3-6433-3785
<https://www.healthcare.nikon.com/en/>

ISO 14001 Certified
for NIKON CORPORATION

NIKON INSTRUMENTS (SHANGHAI) CO., LTD.

CHINA phone: +86-21-6841-2050 fax: +86-21-6841-2060
(Beijing branch) phone: +86-10-5831-2028 fax: +86-10-5831-2026
(Guangzhou branch) phone: +86-2-3882-0551 fax: +86-2-3882-0580
https://www.microscope.healthcare.nikon.com/zh_CN/

NIKON SINGAPORE PTE LTD

SINGAPORE phone: +65-6559-3651 fax: +65-6559-3668
https://www.microscope.healthcare.nikon.com/en_AOM/

NIKON INSTRUMENTS KOREA CO., LTD.

KOREA phone: +82-2-6288-1900 fax: +82-2-555-4415
https://www.microscope.healthcare.nikon.com/ko_KR/