

The image shows a histological slide of intestinal tissue, stained with hematoxylin and eosin (H&E). The tissue displays the characteristic structure of the gut, including the mucosal folds (crypts and villi). Overlaid on the top left of the slide is a semi-transparent grey box containing a software interface. This interface includes a vertical toolbar with various icons for navigation and viewing, such as a home icon, a magnifying glass, a sun, a refresh icon, a zoom-in icon, a zoom-out icon, a search icon, and a list icon. The main title 'NZConnectMD Serve' and subtitle 'Web slide server software' are positioned to the right of the toolbar, within the grey area. Below the title, the product code 'U16179-21MDEU' is displayed. Further down, a short paragraph describes the software's capabilities. At the bottom of the page, there is a list of features and their descriptions, separated by vertical blue bars. The Hamamatsu logo and tagline are at the very bottom.

NZConnectMD Serve

Web slide server software

U16179-21MDEU

Web-based image management software
for the viewing of whole slide images
and integrating with 3rd party systems.

Intuitive
User Interface

Smooth navigation and viewing like a microscope

Simple Data
Management

ID/password-based authentication
Access privileges for each slide or folder
Automatic publishing

Synchronized
Viewing

Screen synchronization between multiple clients

LDAP Support

Integrates with customer active directory for user authentication

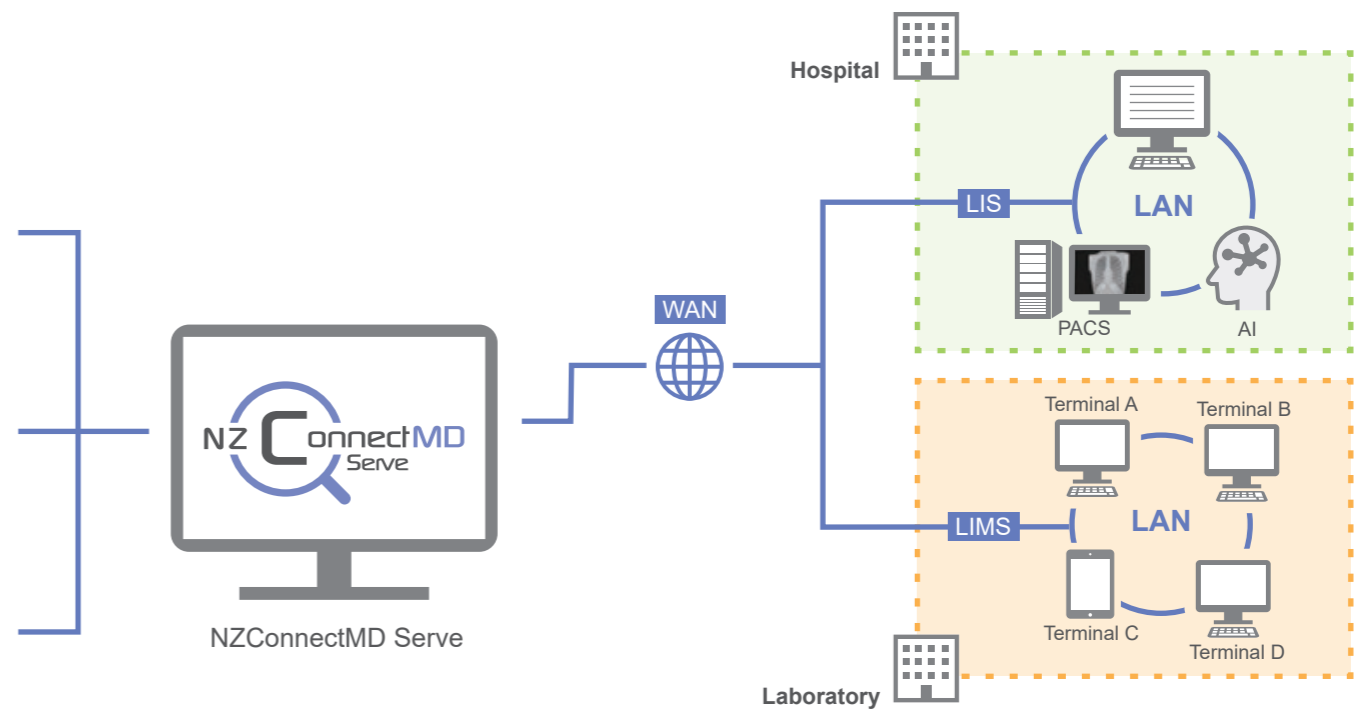
Regulatory
Compliant

IVDR (EU) / UK MDR2002 (UK) / IvDO (CH)

Connecting you with NanoZoomer[®] MD

The NZConnectMD Serve offers network distribution of whole slide image (WSI) scanned by all NanoZoomer MD series scanners.

It facilitates web-based sharing of WSI through networks and provides integration with 3rd party systems.

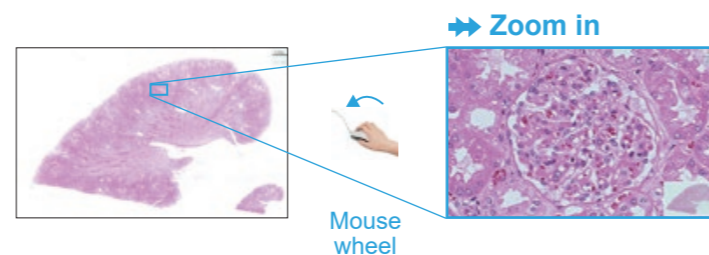


The web viewer in NZConnectMD Serve is capable of working on Windows, macOS, and tablet terminal such as iPad.

Intuitive User Interface

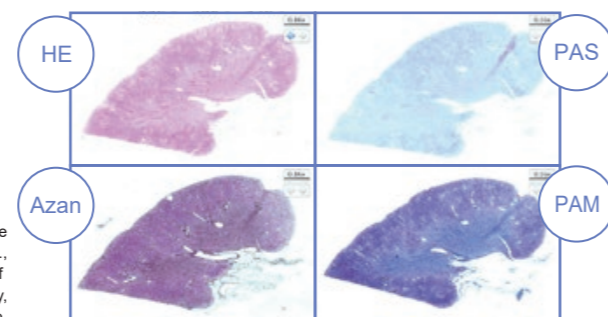
Intuitive viewing

With a simple mouse operation, you can navigate the WSI taken by any MD series NanoZoomer, on a monitor. By moving the mouse wheel, it is possible to move the WSI in any direction, focus the image, and alter the viewing magnification, with a sense to operate like that of a microscope.



Multiview

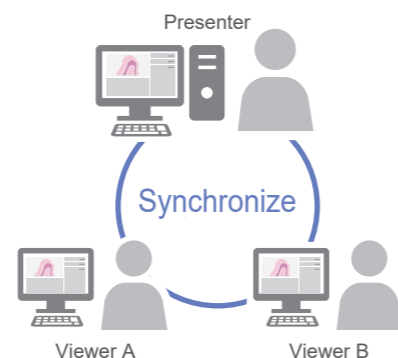
It can provide multiple viewing with high-speed and intuitive operation.



Human kidney tissue slice
Courtesy of Koichi Kawamura Ph.D.,
Associate Professor Department of
Cellular and Organ Pathology,
Akita University Graduate School of Medicine.

Synchronized viewing

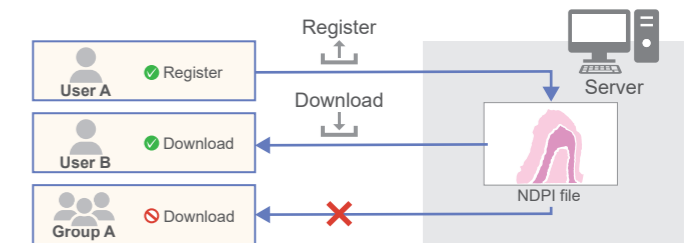
For use in a conference, the content of the presenter's device can be synchronized and displayed on all connected devices. Any participating device can be a presenter, so all participants can exchange work with each other.



Simple Data Management

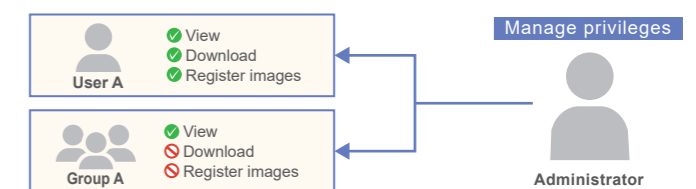
ID/password-based authentication

The NZConnectMD Serve uses ID and password-based authentication. You can manage user privileges through comprehensive role based access control, allowing security control over user groups or individual users.



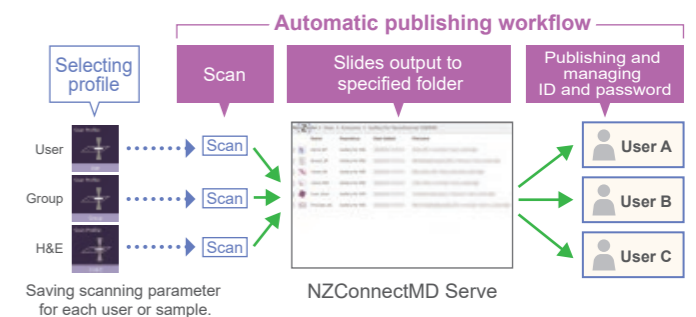
Access privileges for each slide or folder

You can assign user access privileges to collections or individual WSI slides.



Automatic publishing

The NZConnectMD Serve has a feature that automatically publishes received slides to specific folders. The folders can be specified by a user with access privileges.



LDAP support

The NZConnectMD Serve supports LDAP (Active Directory) integration for user authentication management. It makes it easier to manage clients.

System configuration



System requirements

Product name	NZConnectMD Serve Web slide server software
Product number	U16179-21MDEU
Type of computer	PC-AT compatibles
OS	Windows® Server 2022, Windows Server 2019, Windows Server 2016
CPU	Xeon 2.8 GHz or more
Memory	16 GB or more
Available HDD space	50 GB or more
Drive	DVD-ROM Drive
Screen resolution	1024 × 768 or higher
Database management system	Microsoft SQL Server 2016 Express with Advanced Services / Standard (64 bit) Microsoft SQL Server 2017 Express with Advanced Services / Standard (64 bit) Microsoft SQL Server 2019 Express with Advanced Services / Standard (64 bit) Microsoft SQL Server 2022 Express with Advanced Services / Standard (64 bit)

Operating environment

Compatible devices	Compatible OS	Supported browser
Windows PC	Windows 10 Including Touch panel	Microsoft Edge Google Chrome Mozilla Firefox
	Windows 11	
	Windows server 2022	
	Windows server 2019	
Mac	macOS 15.x Sequoia	Safari Ver. 18
	macOS 14.x Sonoma	Safari Ver. 18
iPad	iPadOS Ver. 18	Safari Ver. 18
	iPadOS Ver. 17	Safari Ver. 17

* Please refer to the website for the latest supported OS and browsers for each device.

<https://www.hamamatsu.com/eu/en/product/life-science-and-medical-systems/digital-slide-scanner-for-medical/U16179-21MDEU.html>

Intended Use

The NZConnectMD Serve software was designed to give you the flexibility to host and remotely view NanoZoomer Slide scanner system (MDEU series) digital images across an internal network as well as the Internet. The server software has been designed to be intuitive and simple to use, allowing for fast slide hosting and user management.

- NanoZoomer is a registered trademark of Hamamatsu Photonics K.K. (EU, Japan, UK, USA)
- Windows is a registered trademark of Microsoft Corporation in the USA (and other countries).
- The product and software package names noted in this brochure are trademarks or registered trademarks of their respective manufacturers.
- Subject to local technical requirements and regulations, availability of products included in this brochure may vary. Please consult your local sales representative.
- The product described in this brochure is designed to meet the written specifications, when used strictly in accordance with all instructions.

© 2025 Hamamatsu Photonics K.K.

HAMAMATSU PHOTONICS K.K. www.hamamatsu.com


Manufacturer

HAMAMATSU PHOTONICS K.K., Systems Division Joko Factory


812 Joko-cho, Chuo-ku, Hamamatsu-City, Shizuoka-Pref.
431-3196, Japan
Telephone: (81)53-431-0124, Fax: (81)53-433-8031
E-mail: export@sys.hpk.co.jp

Authorised representative


HAMAMATSU PHOTONICS DEUTSCHLAND GMBH

 Arzbergerstr. 10, 82211 Herrsching am Ammersee, Germany
E-mail: pms-med@hamamatsu.eu

HAMAMATSU PHOTONICS UK LIMITED

 2 Howard Court, 10 Tewin Road, Welwyn Garden City,
Hertfordshire, AL7 1BW, UK
E-mail: pms-med@hamamatsu.co.uk

HAMAMATSU PHOTONICS FRANCE S.A.R.L. Swiss Office

 Dornacherplatz 7, 4500 Solothurn, Switzerland
E-mail: swiss@hamamatsu.ch

Importers

HAMAMATSU PHOTONICS DEUTSCHLAND GMBH

Arzbergerstr. 10, 82211 Herrsching am Ammersee, Germany
Telephone: (49)8152-375-0, Fax: (49)8152-265-8
E-mail: info@hamamatsu.de

HAMAMATSU PHOTONICS FRANCE S.A.R.L.

19 Rue du Saule Trapu, Parc du Moulin de Massy, 91882 Massy Cedex, France
Telephone: (33)1 69 53 71 00, Fax: (33)1 69 53 71 10
E-mail: infos@hamamatsu.fr

HAMAMATSU PHOTONICS FRANCE S.A.R.L. Swiss Office

Dornacherplatz 7, 4500 Solothurn, Switzerland
Telephone: (41)32 625 60 60, Fax: (41)32 625 60 61
E-mail: swiss@hamamatsu.ch

HAMAMATSU PHOTONICS NORDEN AB

Torshamnsgatan 35 16440 Kista, Sweden
Telephone: (46)8-509 031 00, Fax: (46)8-509 031 01
E-mail: info@hamamatsu.se

HAMAMATSU PHOTONICS ITALIA S.R.L.

Strada della Moia, 1 int. 6, 20044 Arese (Milano), Italy
Telephone: (39)02-93 58 17 33, Fax: (39)02-93 58 17 41
E-mail: info@hamamatsu.it